



**Make Water Flow at Will**

**SHANGHAI TIANQUAN PUMP GROUP CO., LTD.**  
**SHANGHAI TIANQUAN LEGEND TRADING CO., LTD.**

No.3568 Jiasong Middle Road, Huaxin Town, Qingpu District, Shanghai, China,

[www.shtqpumps.com](http://www.shtqpumps.com)

[inquiry@tqpumps.com](mailto:inquiry@tqpumps.com)

+86-021-59773433

+8613818025865



Scan to browse our web



Scan to browse our Facebook.

**TIANQUAN PUMP**



**General Catalogue**

[www.shtqpumps.com](http://www.shtqpumps.com)



Shanghai Tianquan Pump Group Headquarters



Anhui Casting Foundry



Motor Manufacturing Factory

Shanghai Tianquan Pump Group Co.,Ltd.was founded in the late 1980s and is now located in Qingpu District,Shanghai.TQ PUMP currently has 4 factories with a floor space of over 550,000 sq meter and the group outputs over 150,000 pumps annually.

TQ PUMP is a pump manufacturer whilst specializing in the industrial centrifugal pumps,producing pump ranges including inline pumps,sewage pumps,end suction pumps,double suction split casing pumps and chemical process API pumps.We have prestigious certifications like TUV,CE, ROHS,ISO 9001,ISO 14001 and OHSAS 1801.

Due to our whole industry chain production layout and energy-saving product principle,our products are featured with competitive price,energy-saving,and long service life. Up to now,TQ PUMP is long term supplier of world class companies like KSB and products are selling well in 34 provinces national wide and are exported to 50 countries and regions.

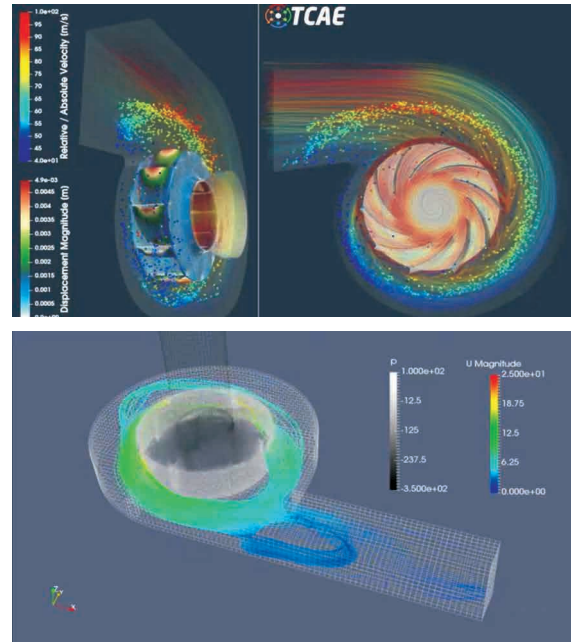
### TQPUMPS IN NUMBER

<b>4</b> Plants	<b>55,000m<sup>2</sup></b> Plant Area	<b>150,000</b> Production Units
<b>30+</b> Sales & Service outlets	<b>50+</b> Countries and Regions	<b>700MN+</b> Annual Sales



## Research & Development

A research and development team of over 30 members, holding 15 national patents; equipped with CFD fluid mechanics professional internal flow field analysis software system, continuously upgrading the hydraulic model.



## Casting

Equipped with multiple automated and semi-automated casting lines, our casting quality and precision are significantly superior to similar products.



## Machining

The imported high-precision five-axis simultaneous machining centers and a large number of precision CNC machining equipment ensure our parts to achieve higher machining accuracy.



## Quality Control

Equipped with pump performance test benches, spectrometers, dynamic and static impeller balancing machines, and other testing equipment. The product qualification rate is controlled at over 99%.



## Painting

With automatic cataphoretic coating line and automatic painting line, the products has good appearance, strong rust resistance and corrosion resistance.

## Certificate



- ISO9001:2015 Quality Management System
- ISO14001:2015 Environmental Management System Certificate
- ISO45001:2018 Occupational Health & Safety Management System Certification
- ISO50001:2018 Energy Management System Certificate
- CE.

## VERTICAL INLINE PUMP

### TP/TPL



Extended shaft motor

Standard norm motor

#### Application

- Irrigation and drainage pump station
- Industrial water circulation
- Central heating system
- Circulation water for air-condition
- Fire-fighting system
- Water supply for industry and building

#### Technical Specs.

- Flow: up to 1700m<sup>3</sup>/h
- Head: up to 150m
- Liquid temperature: -20°C-140°C
- Maximum operation pressure: PN16/PN25
- Outlet Diameter: DN32-DN350

#### Features

- World-class Hydraulic Performance with wide range of high efficiency interval.
- Modular design, high degree of universalization
- Small occupation saves installation space.

## HORIZONTAL END SUCTION CLOSE COUPLED PUMP

### TPW/TWZ



Sliding Base

#### Application

- Irrigation and drainage pump station
- Circulation and transfer of clean, chemically non-aggressive water and other liquids
- Central heating system
- Circulation water for air-condition
- Fire-fighting system

#### Technical Specs.

- Flow: up to 1700m<sup>3</sup>/h
- Head: up to 150m
- Liquid temperature: -20°C-140°C
- Maximum operation pressure: PN16/PN25
- Outlet Diameter: DN32-DN350

#### Features

- The center of gravity is low, making operation stable.
- Can be pulled & pushed base structure and designed for easy maintenance

## VERTICAL MULTISTAGE PUMP

### TDL/TDLF



TDL

TDLF

#### Application

- Water supply & drainage for high-rise buildings
- Filtration and transfer at waterworks
- Industrial liquid transportation
- Water treatment systems
- Agricultural irrigation

#### Technical Specs.

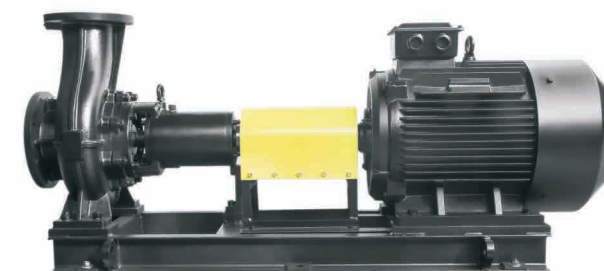
- Flow: up to 240m<sup>3</sup>/h
- Head: up to 300m
- Liquid temperature: -15°C-105°C
- Maximum operation pressure: PN16/PN25
- Outlet Diameter: DN25-DN150

#### Features

- Stainless steel parts with elegant appearance, low noise and less vibration
- Light weight and easy maintenance

## HORIZONTAL END SUCTION LONG COUPLED PUMP

### TWX



#### Application

- Irrigation and drainage pump station
- Circulation and transfer of clean, chemically non-aggressive water and other liquids
- Central heating system
- Circulation water for air-condition
- Fire-fighting system

#### Technical Specs.

- Flow: up to 1700m<sup>3</sup>/h
- Head: up to 150m
- Liquid temperature: -20°C-150°C
- Maximum operation pressure: PN16/PN25
- Outlet Diameter: DN80-DN350

#### Features

- Stable operation within the full performance range without overload
- The coupling design can withstand higher temperatures and has a longer service life.

## VERTICAL INLINE CANNED MOTOR PUMP

TPG



Sealless Pump

### Application

- Circulation water for air-condition
- Cooling and freezing system
- Liquid Circulation in industrial process

### Technical Specs.

- Flow: up to 2000m<sup>3</sup>/h
- Head: up to 90m
- Liquid temperature: up to 60°C
- Maximum operation pressure: PN16
- Outlet Diameter: DN25-DN400

### Features

- Extremely low noise level
- No seal, no leakage
- Easy maintenance and longer warranty
- Non overload design

## SUBMERSIBLE SEWAGE PUMP

WQ ( ≤ 7.5kw )



Double Channel Impeller



### Application

- City planing, water works, Sewage lifting pump station
- Rain Dranaige of basement
- Sewage drainage of commercial building
- Water conservancy, diversion works

### Technical Specs.

- Flow: up to 220m<sup>3</sup>/h
- Head: up to 50m
- Liquid temperature: up to 40°C
- Maximum operation pressure: PN6
- Outlet Diameter: DN32-DN150
- Cable length: 6m

### Features

- Non Clogging and strong passibility
- High Energy Efficiency
- Flange connection Design

## VERTICAL MULTISTAGE CANNED MOTOR PUMP

TPDF



Sealless Pump

### Application

- Circulation water for air-conditioning
- Cooling and freezing system
- Liquid Circulation in industrial process
- Water supply and booster for high-rise buildings

### Technical Specs.

- Flow: up to 240m<sup>3</sup>/h
- Head: up to 330m
- Liquid temperature: -20°C-150°C
- Maximum operation pressure: PN25
- Outlet Diameter: DN25-DN150

### Features

- Perfect silent substitute for normal stainless steel multistage pump
- No Seal, No Leakage
- Easy maintenance and longer warranty

## MEDIUM TO BIG SEWAGE PUMP

WQ ( ≥ 11kw )



### Application

- Sewage treatment in environmental protection
- Water conservancy, diversion works, Integrated pumping station
- Sewage drainage of enterprise and factory
- Drainage system of municipal sewage water treatment plant
- Farmland Irrigation

### Technical Specs.

- Flow: up to 2200m<sup>3</sup>/h
- Head: up to 50m
- Liquid temperature: up to 40°C
- Maximum operation pressure: PN16
- Outlet Diameter: DN100-DN500

### Features

- Automatic coupling installation.
- Leakage, electric leakage, overload and overheating protection.
- Double mechanical Seal Design

## SUBMERSIBLE SEWAGE PUMP WITH GRINDLE

### WQZG



#### Application

- Sewage drainage of public toilet
- Thin mud drainage of municipal works and construction site

#### Technical Specs.

- Flow: up to 85m<sup>3</sup>/h
- Head: up to 45m
- Liquid temperature: up to 40°C
- Maximum operation pressure: PN16
- Outlet Diameter: DN32-DN150
- Cable length: 6m

#### Features

- No-clogging design Strong pollution discharge capacity.
- Cutting function and tangle-free.
- Motor Heating Protection probe to prevent overheating.
- Good to use in the sewage lifting equipment.

## HORIZONTAL DOUBLE-SUCTION PUMP

### SOW



#### Application

- Irrigation and drainage pump station
- Industrial water circulation
- Central heating system
- Circulation water for air-condition
- Fire-fighting system

#### Technical Specs.

- Flow: up to 3000m<sup>3</sup>/h
- Head: up to 150m
- Liquid temperature: -15°C-105°C
- Maximum operation pressure: PN16/PN25
- Outlet Diameter: DN80-DN500

#### Features

- Double channel, double volute structure, high flow rate and efficiency.
- Various configurations make the SOW suitable for multiple occasions

## SEWAGE LIFTING EQUIPMENT

### TQPW



#### Application

- Rural and countryside areas
- Tourist attractions far from urban sewage networks
- Decentralized residential areas
- Temporary event sites

#### Technical Specs.

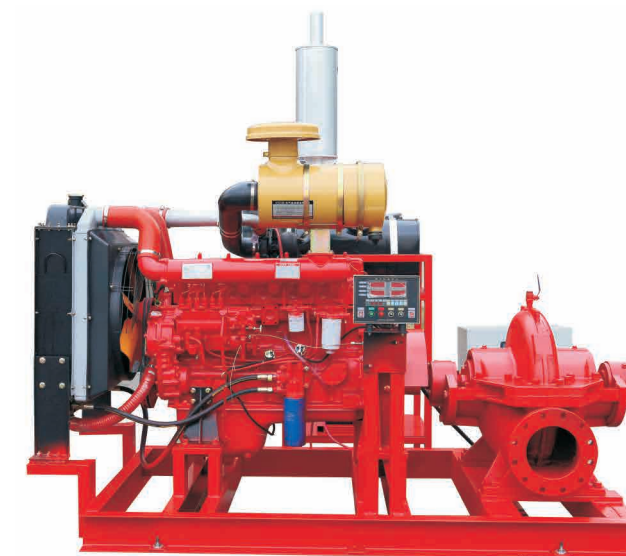
- Flow: up to 11m<sup>3</sup>/h
- Head: up to 15m
- Tank Material: PE / SS304
- Number of Pump: 1-2
- Pump Installation: built-in

#### Features

- Completely sealed with no air pollution design.
- Compact Structure and small space occupation.
- Different direction inlet selection for easy installation.

## DIESEL ENGINE PUMP

### XBC-SOW



#### Application

- Water supply for industrial fire protection systems in factories, power plants, logistics centers, ports, coal mines, and other facilities.
- As standby fire pump in the fire fighting system

#### Technical Specs.

- Flow: up to 2200m<sup>3</sup>/h (9680 GPM)
- Head: up to 140m (200 PSI)
- Speed: 3000RPM/ 1500RPM
- Pump Type: horizontal double suction , horizontal end suction

#### Features

- Supplied as whole unit with capacity and head equal to electric fire pump, with diesel engine, fuel tank, water tank, battery, control box and common base plate.
- Diesel Engines of reliable quality and compact size

## SINGLE STAGE FIRE PUMP

### XBD-L/XBD-W



#### Application

- Water supply of fixed firefighting systems in industrial and civil buildings
- Automatic fire sprinkler system.
- Fire protection pressure stabilization system.

#### Technical Specs.

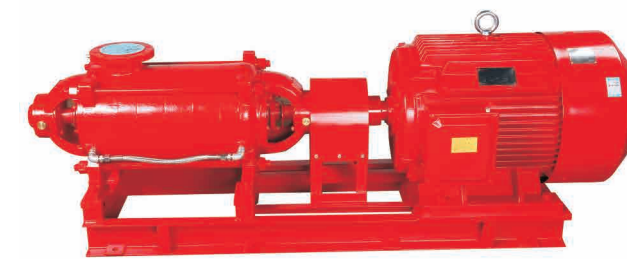
- Flow: up to 100L/S
- Head: up to 150m
- Liquid temperature: up to 80°C
- Maximum operation pressure: PN16
- Outlet Diameter: DN25-DN300

#### Features

- Features an integrated motor and pump structure with good concentricity and stable operation.
- The impeller and shaft are made of stainless steel.
- Repaired without disassembling the pump body pipe connections.

## HORIZONTAL MULTISTAGE FIRE PUMP

### XBD-DW



#### Application

- Water Supply in the high-rise construction firefighting system
- Industrial and municipal water supply and drainage
- Long-distance water transportation

#### Technical Specs.

- Flow: up to 60L/S
- Head: up to 200m
- Liquid temperature: up to 80°C
- Maximum operation pressure: PN16/PN25
- Outlet Diameter: DN100-DN200

#### Features

- Featuring a horizontal, single-suction multistage, segmental structure, the pump set has a compact size and pleasing appearance.
- The shaft seal uses high-quality mechanical seals that are wear-resistant, leak-free, and have a long service life.
- The center of gravity coincide with the center of the pump feet enhancing operational stability and extending service life

## VERTICAL MULTISTAGE FIRE PUMP

### XBD-LG/XBD-TDL



#### Application

- Water supply of fixed firefighting systems in industrial and civil buildings
- Jockey Pump for fire pressure stabilization system
- Booster pump

#### Technical Specs.

- Flow: up to 60L/S
- Head: up to 200m
- Liquid temperature: up to 80°C
- Maximum operation pressure: PN16/PN25
- Outlet Diameter: DN25-DN200

#### Features

- Compact structure, small volume, and takes up less space.
- High head capability
- Offer higher reliability and a lower risk of failure.

## HORIZONTAL DOUBLE SUCTION FIRE PUMP

### XBD-SOW



#### Application

- Water supply of fixed firefighting systems in industrial and civil buildings
- Automatic fire sprinkler system.
- Fire protection pressure stabilization system.

#### Technical Specs.

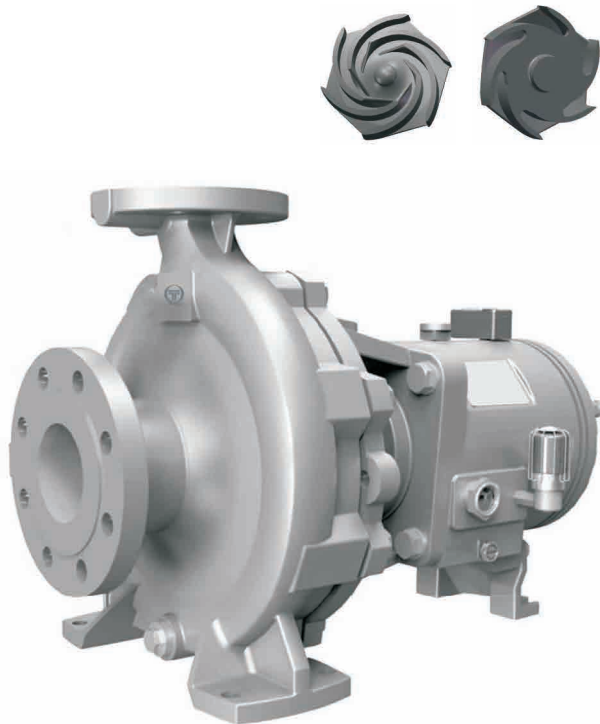
- Flow: up to 420 L/S
- Head: up to 120m
- Liquid temperature: up to 80°C
- Maximum operation pressure: PN16/PN25
- Outlet Diameter: DN150-DN350

#### Features

- Double channel, double volute structure for high flow rate.
- Stainless steel Impeller and Shaft for corrosion resistance

## HORIZONTAL END SUCTION CHEMICAL PROCESS PUMP

TK



### Application

- Mainly used in chemical and petroleum industries
- Transportation of corrosive liquids
- transport pure water, liquid medicine and other high health requirements media

### Technical Specs.

- Flow: up to 1700m<sup>3</sup>/h
- Head: up to 300m
- Liquid temperature: -73°C-370°C
- Maximum operation pressure: PN16/PN25
- Outlet Diameter: DN25-DN200

### Features

- Use of reverse impellers for repeatable and efficient performance
- Predictable optimal seal chamber pressure can be re-established after each impeller adjustment
- The sealing environment created by the conical sealing chamber maximizes the seal life
- The reverse blade impeller can be adjusted in the workshop

## IEC GENERAL PURPOSE MOTOR

IE2/IE3/IE4



### Application

- Pump
- Air compressor
- Fan
- Machinery
- Mining equipment

### Features

- Complete range of models, strong power.
- Energy saving and environmental protection.
- Continuous operation.

<b>Rotor Structure</b>	Squirrel-Cage
<b>Motor Frame Material</b>	Casting Iron
<b>of Number Pole</b>	2/4/6/8/10
<b>Casing Protection</b>	TEFC
<b>Center Height</b>	80-355
<b>Safety Factor</b>	1.1
<b>Stator Winding</b>	Copper Wire
<b>Starting Mode</b>	y- $\delta$ Starting
<b>Product Certificate</b>	CE
<b>Voltage</b>	380V/Customized
<b>Frequency</b>	50/60Hz
<b>Max Motor Power</b>	375KW
<b>Mounting type</b>	B5 B35 B3 V1
<b>Efficiency Level</b>	IE2/IE3/IE4
<b>Insulation Class</b>	F
<b>Protection Class</b>	IP55
<b>Cooling Method</b>	AIR-COOLED
<b>Thermal Protection</b>	PTC or PT100 as required

## SINGLE STAGE STAINLESS STEEL CHEMICAL PUMP

TQH/TQWH



### Application

- Transport corrosive liquids such as acids, alkalis and solvents.
- Conveying food grade media to ensure hygiene and safety.
- Transport pure water, liquid medicine and other high health requirements media

### Technical Specs.

- Flow: up to 1200m<sup>3</sup>/h
- Head: up to 150m
- Liquid temperature: up to 80°C
- Maximum operation pressure: PN16
- Outlet Diameter: DN25-DN400

### Features

- Highly resistant to corrosion
- Compatible with a wide range of chemicals
- Small footprint and easy to install

## VARIABLE FREQUENCY MOTOR

YVFP



### Application

- Pump
- Air compressor
- Fan
- Machinery
- Mining equipment

### Features

- Energy-saving, wide range of speed regulation, low noise, and small vibration output.
- Characteristic of low-speed constant torque output, and high-speed constant power output.

<b>Rotor Structure</b>	Squirrel-Cage
<b>Motor Frame Material</b>	Casting Iron
<b>Number of Poles</b>	2/4/6/8/10
<b>Casing Protection</b>	TEFC
<b>Center Height</b>	80-355
<b>Safety Factor</b>	1.1
<b>Stator Winding</b>	Copper Wire
<b>Starting Mode</b>	Variable Frequency Starting
<b>Product Certificate</b>	CE
<b>Voltage</b>	380V/Customized
<b>Frequency Range</b>	5-100Hz
<b>Max Motor Power</b>	315KW
<b>Mounting type</b>	B5 B35 B3 V1
<b>Efficiency Level</b>	IE3
<b>Insulation Class</b>	F
<b>Protection Class</b>	IP55
<b>Cooling Method</b>	AIR-COOLED
<b>Thermal Protection</b>	PTC or PT100 as required